

A Little Bit of You

1 **YOUNG ELSA:**

mf A lit-tle bit of you, a

3

lit-tle bit of me, a

4 **(YOUNG ELSA):**

part that loves to dream.

YOUNG ANNA:
(catching on)

A part that

5 **(YOUNG ANNA):**

swings from a tree. A lit-tle like me, a

7 **YOUNG ELSA:**

A part that's nice.

(YOUNG ANNA):

lit-tle like you. A part that's



A loy - al friend who is



naugh-ty too! A loy - al friend who is

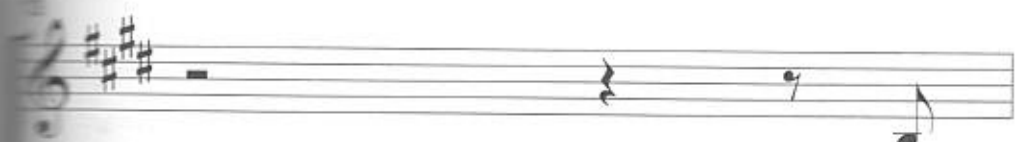


there no mat-ter what, with a big round bel-ly...



there no mat-ter what.

...and a



He'll



big, boun - cy butt!

He'll



love warm hugs and the bright sun - light.



love warm hugs and the bright sun - light, and he'll

16

But he'll

real - ly love the sum - mer.

17

melt!

Yeah, you're right. So we'll

18


Yes, to -

build him back to-gether.


19

ge - ther, that's the key! 'Cause he's a

'Cause he's a



lit - tle bit of you and me.



lit - tle bit of you and me.

STOP

in their snowman

Olaf, and I like

happiness.)

magic!

not supposed to.

4

YOUNG ANNA: But your magic is the most beautiful, wonderful, perfect thing in the whole wide world.

YOUNG ELSA: Do you really think so?

YOUNG ANNA: Yes!

YOUNG ELSA: Okay.

(YOUNG ELSA stands and waves her arms. The SNOW CHORUS enters. They personify snow and ice throughout the show.)

4